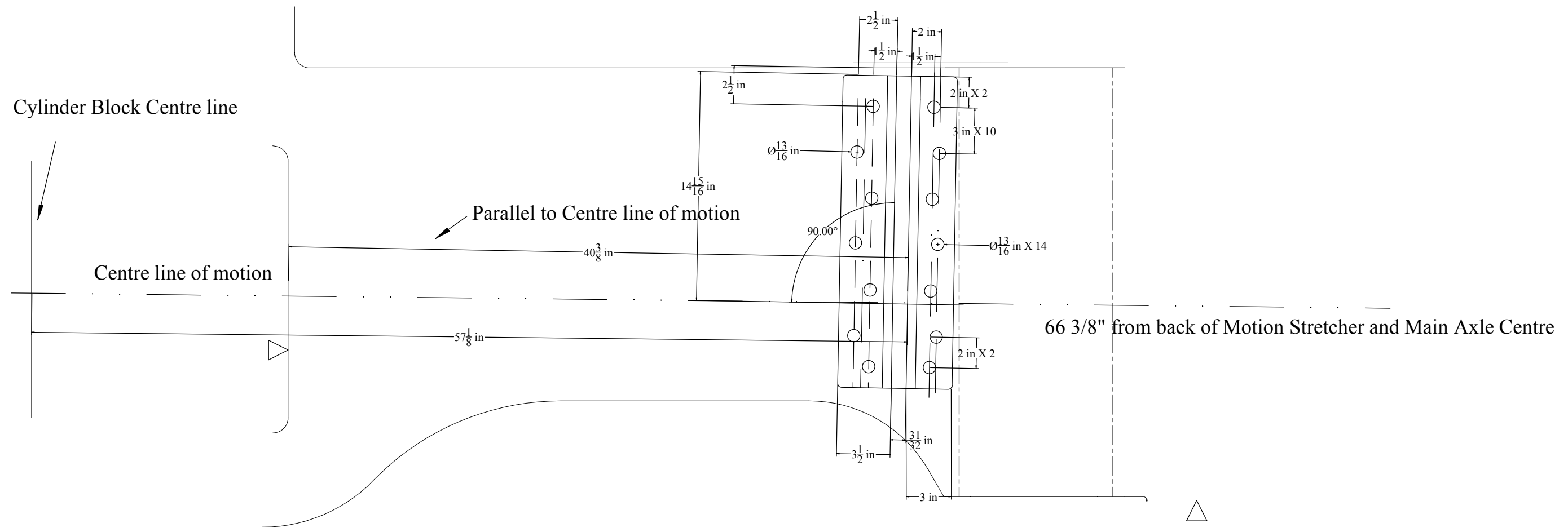


© 2013 THIS DOCUMENT IS THE PROPERTY OF THE GCR 567 LOCOMOTIVE GROUP AND SHALL NOT BE COPIED, LOANED OR USED IN ANY WAY, EITHER IN WHOLE OR PART FOR ANY PURPOSE OTHER THAN THAT FOR WHICH IT IS SUPPLIED WITHOUT THE EXPRESS WRITTEN AUTHORITY OF GCR 567 GROUP.

REVISIONS			
REV	DESCRIPTION	DATE	APPD



ALL LIMITS IN ACCORDANCE WITH FOLLOWING TABLE UNLESS OTHERWISE SPECIFIED

DECIMALS	± .010
FRACTIONAL	± 1/64
METRIC	± 0.25mm
ANGLES	± 1/2°

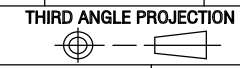
DIMENSIONS IN [mm] / inches APPLY AFTER PLATING
 FOR ADDITIONAL INFORMATION REFER TO ES.100 / XXXX

MATERIAL Black Carbon Steel
 Angle to BSEN 10025-2 S275JR &
 MS Plate to BS4360-43A

DRAWN	ADB	20/09/15
CHECKED		
ENGR	---	---
APPD		
MATL ENGR	---	---
MFG ENGR	---	---
QA ENGR	---	---

GCR 567 www.gcr567loco.co.uk		RUDDINGTON FIELDS STATION MERE WAY RUDDINGTON NOTTINGHAM NG11 6NX	
		Motion Stretcher Position	
ISO	PROJECT	DRAWING NO.	
A2	GCR 567	GCR567-1-1008A	
SCALE: 1:10		DO NOT SCALE DWG	SHEET 1 OF 1

CLASS NA PART PER ASME Y14.5M-1994 WEIGHT XXX kg/[XXX lbs]



DWG NO. GCR567-1-1007 SH 1